

The Manhattan Regatta 2013 - Notice of Race

Organizing Authority (OA) – J/105 Class Fleet 10

1 RULES

- 1.1 The regatta will be governed by the rules as defined in *The Racing Rules of Sailing* (RRS), including the US SAILING prescriptions, and *The J/105 Class Rules* (CR), with the exception of provisions under 1.2. For the PHRF division, the current PHRF Regulations administered by the PHRF-MA
- 1.2 Under RRS rule 87, CR 7.1 may be amended in the sailing instructions to allow for one junior crew.
 - a. Junior crew shall be defined as a crew member under the age 15 whose weight shall not be included in overall crew weight limit.
- 1.3 USCG approved personal flotation devices (PFD) shall be worn at all times. This changes RRS rule 40.

2 ELIGIBILITY AND ENTRY

- 2.1 The regatta is open to all boats of the J/105 class, and offshore boats racing under PHRF. All competitors racing in the J105 class need to be current J105 class members. Boats racing in the PHRF division must have a valid 2013 PHRF-MA certificate. The Organizing Authority may reject the entry of any yacht that does not in its consideration meet the general parameters of the other yachts entered with regard to size or design.
- 2.2 Eligible boats may enter by completing the online registration form and paying the entry fee at <http://www.yachtscoring.com/emenu.cfm?eID=833> by 5 pm local time, 17 May 2013.

3 CLASSIFICATION AND ADVERTISING

- 3.1 This is a Level A event under CR 3.6.
- 3.2 A boat and her crew shall comply with ISAF Regulation 20, Advertising Code.

4 Fees

- 4.1 Entry fee of \$125 is required.

5 SAILING INSTRUCTIONS

- 5.1 The sailing instructions will be available at the Liberty Landing Lightship on 18 May 2013, 0900 and online at <http://www.yachtscoring.com/emenu.cfm?eID=833> a week prior to the race start.

6 VENUE

- 6.1 Racing area to be in New York Harbour in the vicinity of Ellis Island. See Attachment 1.

7 SCHEDULE OF EVENTS

- 7.1 Dates of Racing: 18 & 19 May 2013
- 7.2 Number of races to be determined at the sole discretion of the Race Committee and sailing conditions.
- 7.3 Friday, May 17
TBD Dockside social at The North Cove Marina
(in conjunction with The Atlantic Cup event)
- Saturday, May 18
1000 Skippers meeting – location provided in sailing inst.
1255 Warning signal for the first race - PHRF class
1325 Warning Signal for the first race – J105 Class
Approx. 1hr after finish Outdoor barbeque at Liberty Landing Marina
(of last J105 race)
- Sunday, May 19
1025 Warning signal for the first race - J105 class
1055 Warning signal for the first race - PHRF class
Approx. 1hr after finish Dockside Awards presentation (Location TBD)
(of last J105 race)

8 COURSES

- 8.1 J105 Class:
A. The courses may be around government marks, windward-leeward marks set by the race committee, and/or a distance race.
B. Windward-leeward marks will be inflatable marks.
- 8.2 PHRF Division:
A. The courses will be around government marks, and/or a distance race
- 8.3 Course descriptions will be provided in the sailing instructions
- 8.4 The approximate position of the starting area will be announced approximately 45min before the initial warning signal each day. VHF Channel will be in the sailing instructions.

9 PENALTY SYSTEM

- 9.1 Rule 44.1 is changed so that the Two-Turns Penalty is replaced by the One-Turn Penalty, unless the boat has broken a rule while in the *zone*, in which case the penalty shall be a Two-Turns Penalty.

10 SCORING

- 10.1 One-race shall constitute a series.
- 10.2 The Low Point System of Appendix "A" of RRS will apply, except that all races will be scored; there will be no throw-outs.

11 BERTHING

- 11.1 Boats may be berthed at The North Cove <http://www.thenorthcove.com/> or Liberty Landing Marina <http://www.libertylandingmarina.com/> Reservations are essential.

12 HAUL-OUT RESTRICTIONS

- 12.1 Boats shall not be hauled out during the regatta except with the prior permission of the Race Committee.

13 NAVIGATION RULES

- 13.1 Boats interacting in NY Harbor with vessels not racing are cautioned to observe the [USCG Commandant Instruction M16672.2D, Navigation Rules](#) and to yield right of way to vessels restricted in their ability to maneuver, especially to tugs, ferries, and barges. Any boat observed to impede such traffic may receive a DSQ.

14 RADIO COMMUNICATIONS

- 14.1 Except in an emergency, or to report a protest or withdrawal, a boat shall neither make radio transmissions while racing nor receive radio communications not available to all boats. This restriction also applies to mobile telephones.
- 14.2 All yachts shall carry an operable VHF Radio capable of transmitting and receiving on channels 9, 13, 16, 69. VHF channel 69 will be used for communications with the RC.

15 PRIZES

- 15.1 Overall prizes will be given at the end of the regatta.
- 15.2 First place prize for two or more entries; second place for four or more; and third place for six or more.

16 NJORC series trophy

- 16.1 The Manhattan Regatta is a qualifying event for the J105 Class of the NJORC series. For individual Manhattan Regatta races to be scored towards this series, a participating yacht must have a valid 2013 PHRF-MA certificate prior to the start of the regatta.

17 DISCLAIMER OF LIABILITY

- 17.1 Competitors participate in the regatta entirely at their own risk, RRS Rule 4, Decision to Race. The organizing authority accepts no liability for material damage or personal injury or death sustained in conjunction with or prior to, during, or after the regatta. As a condition of the participation of any boat in any race or related activity sponsored or undertaken by Fleet 10, the owner and each crewmember agree that the safety of the boat and her crew and the decision whether or not to start or continue to race is solely their responsibility. All competitors waive all claims, which he or she, or any heir, representative, successor or assignee, may have against Fleet 10 and its officers, trustees, members, committees, employees or agents, arising out of or in any way connected with participation in such race or activity.

18 CONTACT INFORMATION

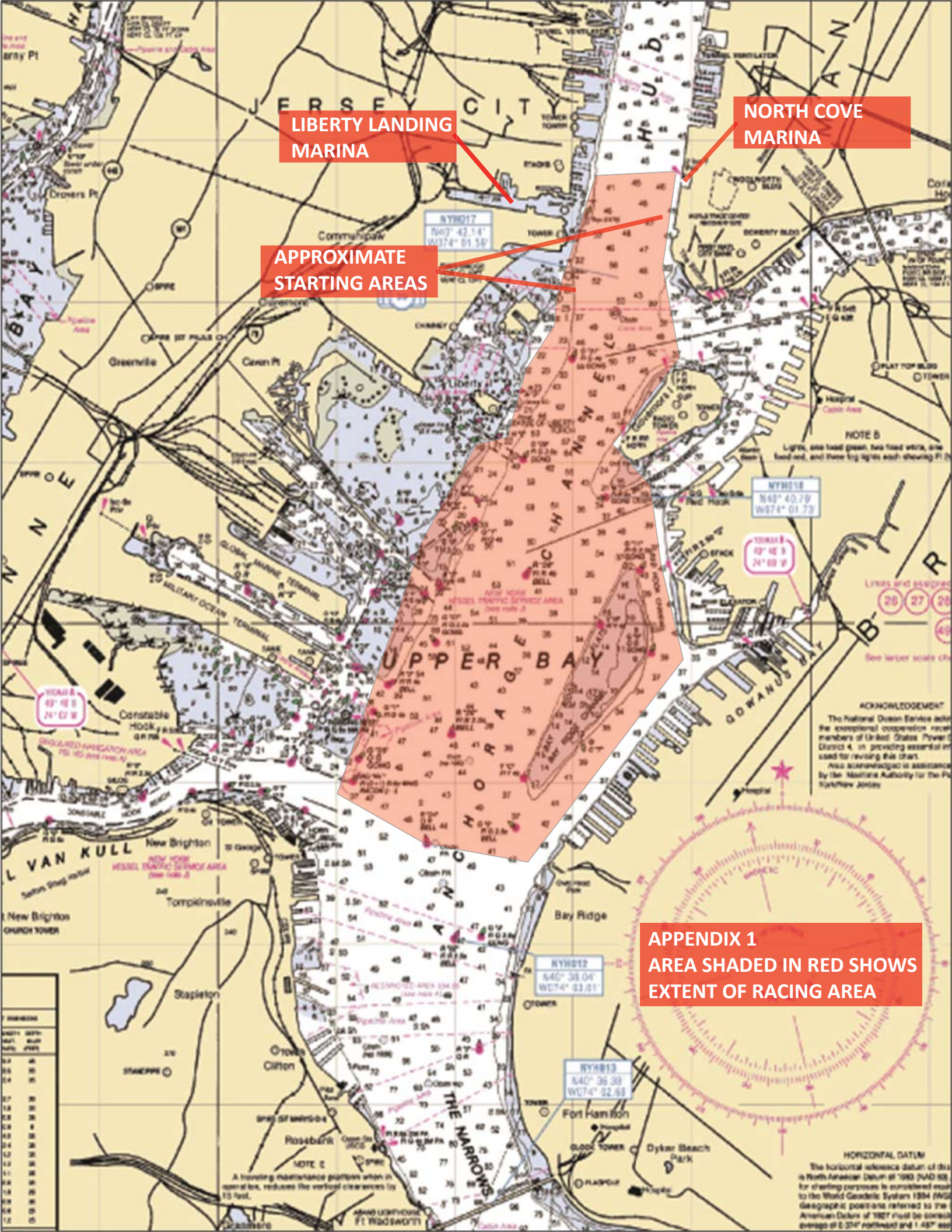
- 18.1 For further information contact:

David Spence (Fleet 10 Captain): David@windigodesign.com

Paul Zajac (Fleet 10 Secretary): PZajac@ThemisTrading.com

Or go to the event website:

<http://www.yachtscoring.com/emenu.cfm?eID=833>



LIBERTY LANDING MARINA

NORTH COVE MARINA

APPROXIMATE STARTING AREAS

**APPENDIX 1
AREA SHADED IN RED SHOWS
EXTENT OF RACING AREA**

DEPTH	SAFETY	DEPTH	SAFETY
FEET	FEET	METERS	METERS
0.5	1	0.5	1
1	2	1	2
1.5	3	1.5	3
2	4	2	4
2.5	5	2.5	5
3	6	3	6
3.5	7	3.5	7
4	8	4	8
4.5	9	4.5	9
5	10	5	10
5.5	11	5.5	11
6	12	6	12
6.5	13	6.5	13
7	14	7	14
7.5	15	7.5	15
8	16	8	16
8.5	17	8.5	17
9	18	9	18
9.5	19	9.5	19
10	20	10	20
10.5	21	10.5	21
11	22	11	22
11.5	23	11.5	23
12	24	12	24

ACKNOWLEDGEMENT
The National Ocean Service joins in the exceptional cooperation received from members of United States Power District 4, in providing essential material for revising this chart.
This nautical chart is assisted by the Maritime Authority for the Port of New York and New Jersey.

HORIZONTAL DATUM
The horizontal reference datum of this chart is North American Datum of 1983 (NAD 83). For charting purposes it is considered equal to the World Geodetic System 1984 (WGS 84) geographic positions referred to the American Datum of 1983 must be corrected through the use of 0.224' northward and 1.487' eastward.

NOTE C
A hoisting distance platform when in normal use, reduces the vertical clearances by 15 feet.